

# HOMWOOD

2,575 Square Feet  
 2 Bed / 2.5 Baths  
 2 Car Garage  
 1 Story  
 Morning Room  
 Flex Room  
 Optional Bedroom 3/Bath 3



Elevation A



Elevation B



Elevation C

## CLASSICS FEATURES

### First Impressions

- Timeless architectural designs
- Custom designed exterior paint schemes
- Decorative stone accents (per elevation)
- Front yard landscaping with automatic sprinklers
- Concrete siding with a 50-year warranty (per elevation)
- Concrete roof tiles with a limited lifetime warranty
- Dramatic 8' Therma-Tru Fiber Classic entry door
- Broom finished concrete driveway and walkway
- Sectional roll-up raised panel garage doors
- Electric garage door opener with two remotes
- Energy efficient dual pane Low E Vinyl windows
- Rear and side yard fencing

### Enhanced Living Spaces

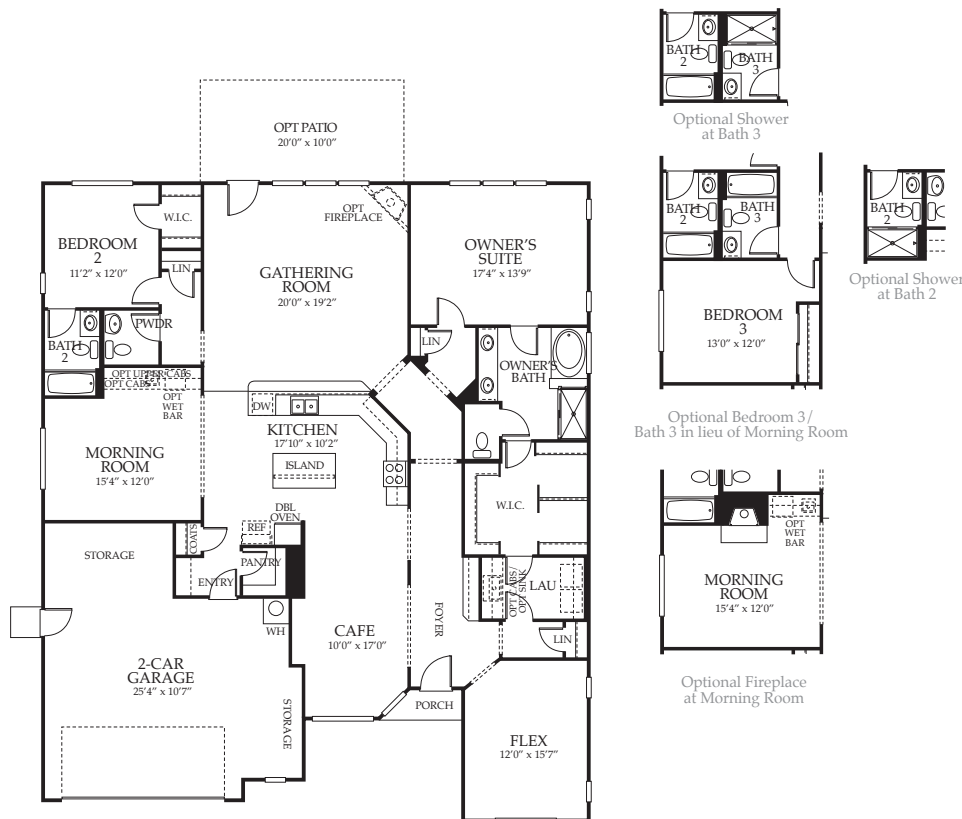
- Impressive 12" tile in entry, kitchen, baths, laundry, and nook (per plan)
- Central heat and 13-seer air conditioning system
- Raised panel doors throughout the entire home
- Impressive 3 1/4" baseboards
- Rounded bullnose drywall corners
- Rocker switches
- Pre-wired television in great room and master bedroom
- Pre-wired telephone in kitchen and master bedroom
- Ceiling fan pre-wire in great room and master bedroom

### Elegant Baths

- Master bath includes beautiful solid surface surrounds and countertops
- Guest baths include integrated tub surround and solid surface countertops
- Clear glass shower enclosure with chrome frame at master bath
- Beautiful recessed panel maple cabinetry including-
  - Designer features including concealed hinges and melamine interiors
- Designer faucet fixtures by Moen®
- Full width vanity mirror in master bath
- Frameless medicine cabinet in master bath

### Dream Kitchens

- State-of-the-art, black Whirlpool Gold® appliances including-
  - Slide-in 30" self cleaning gas range with power burners and time saving convection cooking system
  - Built-in ENERGY STAR qualified dishwasher with Quiet Partner sound system and hidden controls
  - Built-in vented microwave/hood combo
- Granite slab countertops with 6" backspalsh
- Beautiful maple cabinetry including-
  - Designer features including concealed hinges, melamine interiors, adjustable upper shelves and roll out shelf in lower maple cabinets
- Stainless steel, under-mount double bowl sink with waste disposal
- Moen® faucet with pullout spray
- Overhead recessed can lighting



**HOMESITE #** \_\_\_\_\_

**BUYER:** \_\_\_\_\_

**CO-BUYER:** \_\_\_\_\_

*Del Webb®*